

# HxMap

Unified high-performance  
multisensor workflow



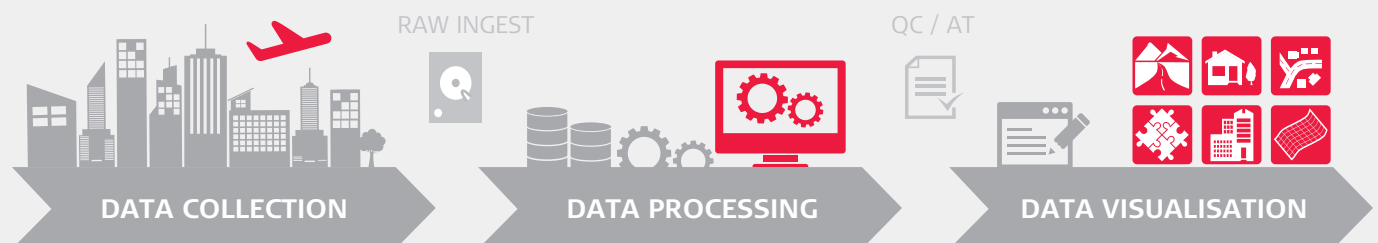


# HxMap – Fastest, most intuitive post-processing workflow for airborne sensors

The increased need for up-to-date geospatial information requires a new approach to data processing: rapid updates over large areas in the shortest possible time. HxMap, the high-performance workflow for airborne sensors, offers a fast, intuitive and efficient post-processing platform that allows you to generate all airborne data products within one single interface.

## Combined data acquisition & processing

To reach highest efficiency, post-processing has been tightly integrated with data acquisition. HxMap can be enabled for individual sensor types. For flexible production, scalable and application-specific software modules are bundled with the matching hardware. RealWorld is designed for large area airborne imaging projects, while RealTerrain provides a complete solution for large area LiDAR mapping, and RealCity supports you with your Smart City and 3D city modelling applications.



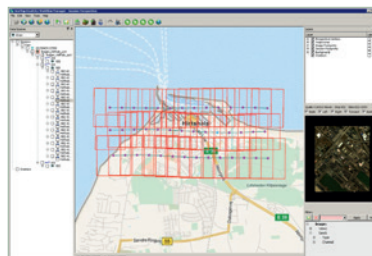
## How does HxMap work?

Starting from data download, raw QC to basic data management, HxMap intuitively guides you through the processing steps based on the input data type. HxMap offers embedded aerial triangulation and a solution for large oblique imaging projects, country-wide orthophoto projects, or small and large area LiDAR projects and corridor mapping alike.

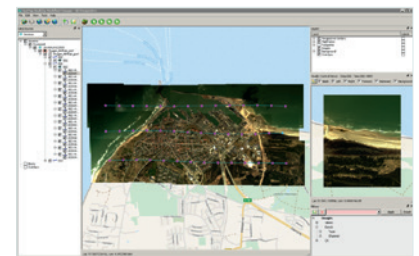
The HxMap product generator creates the SmartBase, allowing all data products to be generated at the push of a button – referenced images, orthophotos, info clouds, intensity and coloured point clouds, and, in the near future, large orthophoto mosaics.



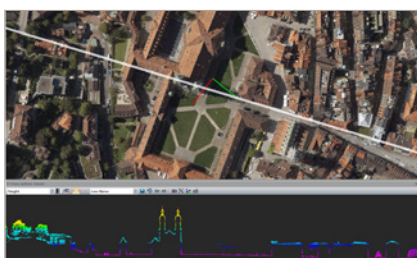
Workflow Manager



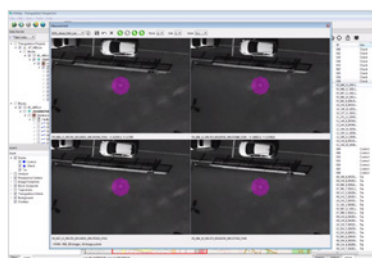
Raw QC



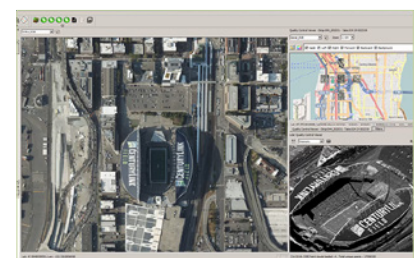
Ingest



LiDAR Module



Aerial Triangulation



3D Modeller Building Generation

## HxMap Solution Bundles

	RealCity		RealWorld		RealTerrain	
Sensor Type	CityMapper (all generations)	ContentMapper	DMC-4	TerrainMapper (all generations) with camera	TerrainMapper without camera	SPL100
Enabler Module	Sold with hardware					
Provider Module Ingest, Raw QC, Workflow Manager, Point Cloud Generator, Projection Engine	■	■	■	■	■	■
Core Imaging Module APM, Aerial Triangulation, InfoCloud, Ortho Generator	■	■	■	□	N/A	□
Core LiDAR Module AutoCalibration, Registration, Colour Encoding, Data Metrics, LiDAR QC	□	N/A	N/A	■	■	■
3D Modeller Module City Modeller, Texture Mapper, 3D Editor, Building Finder	■	□	□	□	□	□

■ = Required module   ■ = Included in bundle   □ = Optional & not included in bundle   N/A = Not applicable



### ■ SAVING YOU TIME & COST

Manage your data in just one intuitive user interface to produce any airborne data product and don't waste time transferring data between or training staff on different software packages.

### ■ UNPRECEDENTED DATA THROUGHPUT

Take advantage of the industry's fastest data throughput and process any amount of data more efficiently in one single post-processing software.

### ■ EASILY ADAPTABLE TO YOUR NEEDS

Create a personal post-processing workflow with this flexible and modular platform that can be customised to your specific application needs by adding software licenses as you need them.

Revolutionising the world of measurement and survey for nearly 200 years, Leica Geosystems creates complete solutions for professionals across the planet. Known for premium products and innovative solution development, professionals in a diverse mix of industries, such as surveying and engineering, safety and security, building and construction, and power and plant, trust Leica Geosystems to capture, analyse and present smart geospatial data. With the highest-quality instruments, sophisticated software and trusted services, Leica Geosystems delivers value every day to those shaping the future of our world.

Leica Geosystems is part of Hexagon (Nasdaq Stockholm: HEXA B; hexagon.com), a leading global provider of information technologies that drive quality and productivity improvements across geospatial and industrial enterprise applications.



Illustrations, descriptions and technical data are not binding. All rights reserved.  
Printed in Switzerland – Copyright Leica Geosystems AG, Heerbrugg, Switzerland, 2021.  
855358 en – 09.21



**Leica RealCity**  
Airborne reality capture



**Leica RealTerrain**  
Airborne reality capture



**Leica CityMapper-2**  
More information,  
smarter decisions



**Leica TerrainMapper-2**  
Highest accuracy  
for regional  
mapping projects

**Leica Geosystems AG**  
leica-geosystems.com



© 2021 Hexagon AB and/or its subsidiaries and affiliates.  
Leica Geosystems is part of Hexagon. All rights reserved.

- when it has to be **right**

**Leica**  
Geosystems