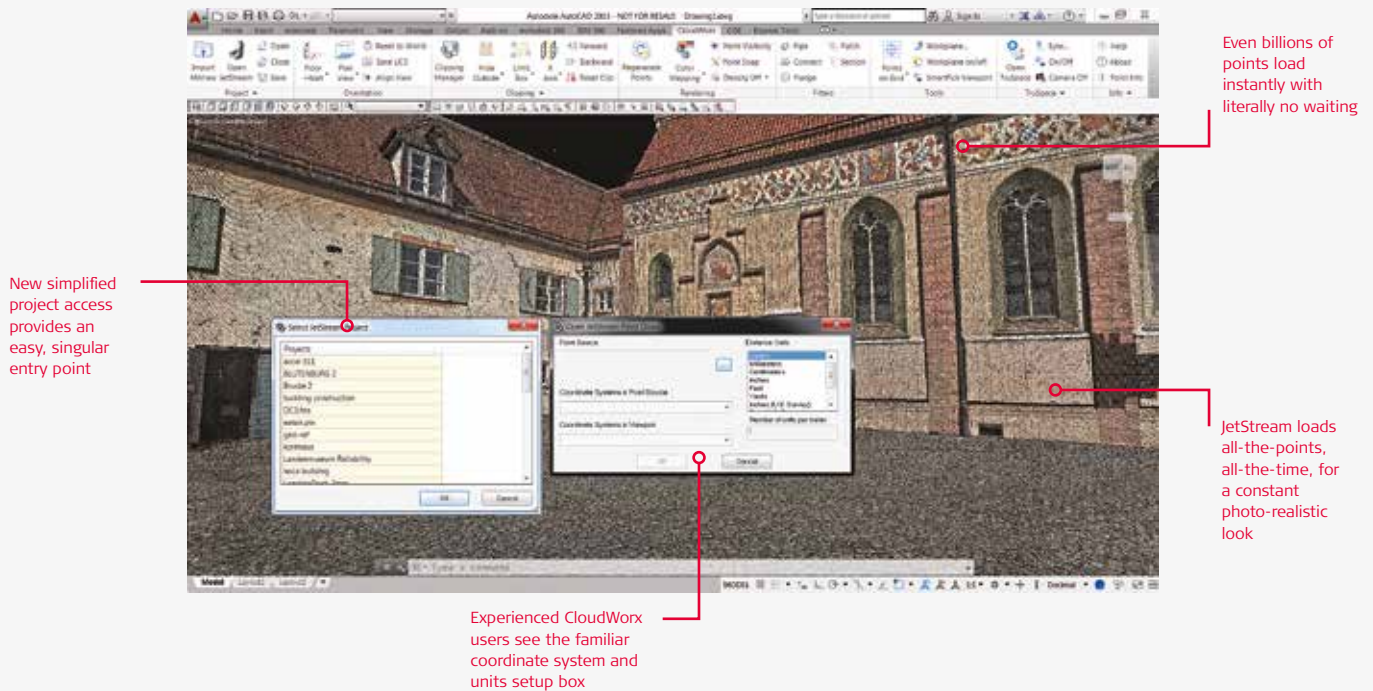


# Leica JetStream 1.3

## Centralised project storage and ultra-high-speed rendering



### Centralised point cloud project storage and access with ultra-high-speed rendering.

Leica JetStream provides state-of-the-art point cloud performance and big data project management for Leica CloudWorx users. JetStream overcomes the biggest productivity challenges in using point cloud data inside of CAD systems: ease-of-use and scalability of ever-increasingly large point cloud data.

JetStream's technology innovations deliver a completely new experience for point clouds in CAD. The instant open, unlimited points, all-the-time paradigm is a revolutionary leap forward in performance. It drives better comprehension, increased productivity and removes the frustration and confusion of previously available solutions.

JetStream's streamlined project management insulates users from needing expert knowledge. JetStream's centralised project storage simplifies and streamlines a team-work approach for unlimited sized workgroups.

### Features and Benefits

- JetStream stores images published from Cyclone (for view in JetStream Viewer or CloudWorx clients' TruSpace)
- File sizes 5x to 10x smaller than traditional storage
- Instant loading and rendering of any sized project
- Pan and Zoom show all-the-points, all-the-time
- Centralised data storage and access removes duplication of data, simplifies back-ups and management, saves time and money
- JetStream Viewer easily connects to ProjectVault for 3D navigation (with support for 3D mouse), visualisation, measurement, image and video screen capture, quick limit boxes, and access to saved UCS' and limit boxes/slices
- JetStream Viewer also works in stand-alone mode (no ProjectVault needed), providing all features but access to saved UCS' and limit boxes
- JetStream Viewer Portable is a no-install, fully contained version of JetStream Viewer for easy sharing of data and interrogation tools with the same features as the stand-alone version

# Leica JetStream 1.3



The JetStream ProjectVault is a very easy to manage data repository. Here you can see the JetStream Admin application showing a list of projects that are currently stored in the vault.



The easy to use JetStream Viewer connects to ProjectVault for 3D navigation (with support for 3D mouse), visualisation, measurement, image and video screen capture, quick limit boxes, and access to saved UCS' and limit boxes/slices.

## Ultra-high-speed rendering, an entirely new experience for CloudWorx users

Users will be amazed with the new ultra high-speed rendering experience inside their favourite CloudWorx/CAD platform. JetStream loads and fully renders the entire point cloud instantly, regardless of the size of the dataset – even billions of points!

During every zoom or pan or clip action, the user experiences the reality of having all-the-points, all-the-time. This not only removes the frustration often experienced with waiting while the screen slowly fills with points, it greatly improves the comprehension of the scene and massively improves the user productivity and accuracy.

## Big data management that delivers on every front

The JetStream ProjectVault is designed from the ground up for user productivity. First having a centralised data storage location delivers obvious benefits in data management supporting access to a wide range of simultaneous client users with no need of wasteful, expensive and error prone data duplication.

Secondly, the greatly improved project data structure simplifies project access for every user, every day with a single entry point for every project. The new project interface shortens the learning curve and ensures productivity.

The new data compression capabilities of JetStream minimise the required storage space by a factor of 10x in some cases, lowering cost and reducing network traffic and bandwidth requirements significantly.

Finally, the centralized project environment is valuable for the IT and management teams, creating a robust, easy-to-use, easy-to-maintain, platform. Data distribution, user access control (data security), backups, and other functions are thus easy and effective.

LEICA JETSTREAM 1.3 SPECIFICATIONS		HARDWARE AND SYSTEM REQUIREMENTS	
<b>JetStream Admin</b>	Administer users, server and storage locations for the JetStream ProjectVault.	<b>Minimum specifications</b>	
<b>JetStream ProjectVault</b>	Storage location for JetStream projects (point cloud and image data) and provides instant load and display of unlimited size point clouds to JetStream clients (i.e. CloudWorx)	<b>Processor:</b> 2 GHz Dual Core processor or better	
<b>JetStream Connector</b>	Provides a connection to the JetStream ProjectVault from JetStream Clients (CloudWorx and Cyclone Clients)	<b>RAM:</b> 8 GB	
<b>JetStream Generator</b>	Installed and run within Cyclone for export of point cloud projects to the JetStream ProjectVault. Exports selected registrations. Exports selected ModelSpace data sets.	<b>Hard disk:</b> 40 GB	
<b>JetStream Viewer Client</b>	Client that receives JetStream point cloud and image data. While connected to Project Vault, the Viewer allows: 3D navigation (with support for 3D mouse), visualisation, measurement, image and video screen capture, quick limit boxes, and access to saved UCS' and limit boxes/slices. While disconnected from ProjectVault, the Viewer has all the above but cannot access the UCS' and limit boxes/slices saved in the ProjectVault data.	<b>Display:</b> SVGA or OpenGL accelerated graphics card (with latest drivers)	
<b>JetStream Client</b>	A client, such as Leica CloudWorx products, that receives JetStream data. Workspace support for management and storage of user created clips and point cloud colour.	<b>Supported operating systems:</b> Windows 7 (64 bit), Windows 8 & 8.1 (64 bit), Windows 10 (64 bit), Windows Server 2008BR (64 bit), Windows Server 2012 & 2012R2 (64 bit)	
		<b>File system:</b> NTFS	
		<b>Recommended Specifications</b>	
		<b>Processor:</b> 3.0 GHz Quad Core w/ Hyper-threading or higher	
		<b>RAM:</b> 32-64 GB's or more	
		<b>Hard disk:</b> 500 GB SSD Drive	
		Large project disk option: RAID 5, 6, or 10 w/ SATA or SAS drives	
		<b>Display:</b> Nvidia GeForce 680, Quadro K3100 or ATI 7850 or better, with 2 GB's memory or more	
		<b>Operating system:</b> Windows 7 (64 bit), or Windows 8 & 8.1 (64bit), Windows Server 2008R2 (64 bit), Windows Server 2012 (64bit) / 2012R2 (64 bit)	
		<b>Network card:</b> 1 GB network card or better	
		<b>File system:</b> NTFS	
		<b>Please note:</b> Optimal system specifications will depend on the number of users connected to the JetStream ProjectVault at the same time	

Windows is a registered trademark of Microsoft Corporation.  
Other trademarks and trade names are those of their respective owners.

Illustrations, descriptions and technical data are not binding. All rights reserved.  
Printed in Switzerland – Copyright Leica Geosystems AG, Heerbrugg, Switzerland, 2016.  
837649en – 04.17

Leica Geosystems AG

leica-geosystems.com



- when it has to be **right**

**Leica**  
Geosystems