

Leica Geosystems Release Notes

Product Leica CloudWorx 1.0.1 for BricsCAD
Date 4 September 2018
From HDS Software Product Management

Contents

Bug Fixes and Improvements	2
Leica CloudWorx 1.0.1 for BricsCAD Compatibility	2
Upgrading to Leica CloudWorx 1.0.1 for BricsCAD from Leica CloudWorx 1.0 for BricsCAD.....	2
Compatibility with Leica CloudWorx 1.0.1 for BricsCAD AND Earlier Versions of Cyclone.....	2
Compatibility with Leica CloudWorx 1.0.1 for BricsCAD AND BricsCAD Versions.....	2
Compatibility with JetStream Enterprise.....	2
Compatibility with CloudWorx Ultimate	2
Licensing	3
Known Issues	3
Optimizing Older Databases with Windows 7 and Higher.....	3
Unusual empty margin when viewing in perspective	3
Installing CLM while JetStream service is running.....	3

Bug Fixes and Improvements

- Resolved an issue that prevented CloudWorx from connecting to JetStream Enterprise 1.5 and/or loading LGS files. Compatibility with earlier versions of JetStream Enterprise and Cyclone IMP database was not affected.
- Resolved an installation issue that affected the Cyclone modelspace view dialog. Issue affected customers installing CloudWorx on a new Windows 10 system only.
- Resolved an issue that caused instability in BricsCAD when opening saved DWG files containing point clouds.
- Improved point cloud rendering in perspective mode.

Leica CloudWorx 1.0.1 for BricsCAD Compatibility

Upgrading to Leica CloudWorx 1.0.1 for BricsCAD from Leica CloudWorx 1.0 for BricsCAD

You must have Administrator-level privileges on your workstation to correctly install Leica CloudWorx software.

If using IMP data, first run the current Cyclone installer if you do not have a version of Cyclone installed. Otherwise/Next run the CloudWorx 1.0.1 InstallShield and follow the directions in the InstallShield Wizard to proceed with the installation. Please heed the warning message about compatibility of earlier version databases. We strongly recommend that users not use the “Repair” option when upgrade. Rather, users should select “Remove” when it appears and then run the InstallShield again to install the new version.

Compatibility with Leica CloudWorx 1.0.1 for BricsCAD AND Earlier Versions of Cyclone

Cyclone 7.2 databases are *NOT* backward compatible. Therefore, older databases must be updated before using Cyclone 7.2 and can no longer be used with earlier versions. If you need to work with your data in older versions of Cyclone or CloudWorx, you should make an archive copy of your database(s) prior to upgrading. Since it can take some time to update and optimize Cyclone databases, we recommend that you optimize your databases overnight, particularly when multiple databases are involved.

Compatibility with Leica CloudWorx 1.0.1 for BricsCAD AND BricsCAD Versions

CloudWorx 1.0.1 for BricsCAD officially supports Bricsys BricsCAD Pro and Platinum V18.2 and newer.

Compatibility with JetStream Enterprise

CloudWorx 1.0.1 for BricsCAD is compatible with JetStream Enterprise 1.3 and higher. To access the latest features, it is recommended that users update to the latest release of JetStream Enterprise 1.5.

Compatibility with CloudWorx Ultimate

CloudWorx for BricsCAD is not included in the CloudWorx Ultimate License.

Licensing

All users with a valid license(s) for CloudWorx 1.0 or later, currently valid CCP, or with CCP which was valid as late as 22 August 2018 can run this new version with no new license required.

Known Issues

Optimizing Older Databases with Windows 7 and Higher

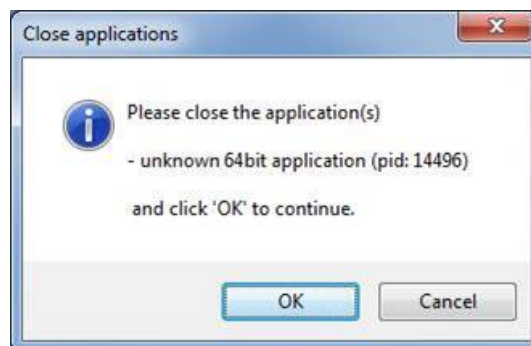
If users wish to use CloudWorx 1.0.1 for BricsCAD to optimize IMP databases from Cyclone version 7.0 or higher, they must first disable User Access Control prior to optimizing, or the optimization will not succeed yet no meaningful error message will be produced.

Unusual empty margin when viewing in perspective

Users will experience an unusual empty border around their point cloud view when view is launched from TruSpace as a result of BricsCAD camera rendering parameters which differ from that of Autodesk products. Due to the nature of BricsCAD camera perspective rendering, the issue is exaggerated when the user zooms as well as when the viewing window is wider (i.e., 16:9 ratio).

Installing CLM while JetStream service is running

During installation of CLM, users may encounter the following error message. This is commonly due to a service like JetStream running in the background.



To enable the successful installation of CLM, please follow these steps:

- Launch the task manager
- Select the Services tab
- Look up the process with the PID (Process ID) shown in the Close applications dialog
- In this case it is JetStream
- Terminate the process so that CLM can be installed
- After CLM is installed, click on the Services button in the Task Manager and restart the service