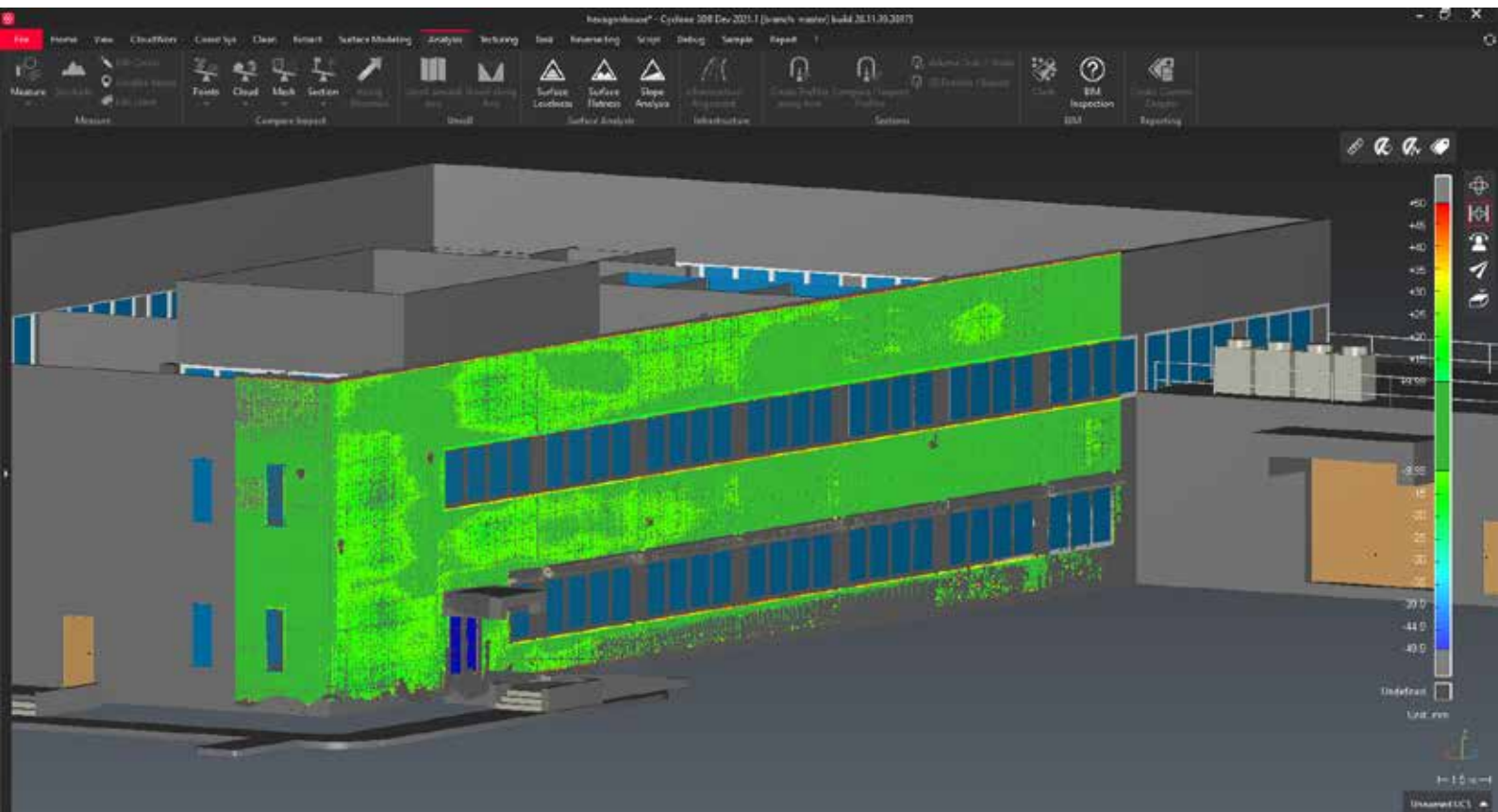


# Leica Cyclone 3DR Technical Specifications



Valid as of November 2021



[leica-geosystems.com](http://leica-geosystems.com)



- when it has to be **right**



# Leica Cyclone 3DR Technical Specifications

FEATURE	STANDARD (BASE)	SURVEY (OPTION)	AEC (OPTION)	TANK (OPTION)	PRO (EDITION)
<b>POINT CLOUD PROCESSING</b>					
Noise detection	◆				◆
Clean/Separate clouds by fence	◆				◆
Separate with object	◆				◆
Reduce	◆				◆
Density homogenisation	◆				◆
Segmentation (by distance, scan station and colour)	◆				◆
Target extraction		◆	◆		◆
Detect moving objects	◆				◆
Ground extractor filter		◆			◆
Walls and floors filter		◆	◆		◆
Tunnel filter		◆	◆		◆
Automatic Classification / Manual Classification		◆	◆		◆
Explode by class / Class representation / Support of classified LAS and LAZ formats	◆				◆
<b>CLOUDWORX</b>					
Connect to Cyclone IMP, LGS and JetStream server	◆				◆
Create UCS and align views	◆				◆
Create and manage limit boxes, limit slices and limit planes	◆				◆
<b>COORDINATE SYSTEMS</b>					
Local coordinate systems	◆				◆
Translation, rotation, free move	◆				◆
Best align N points	◆				◆
Best fit	◆				◆
<b>SURFACE MODELLING</b>					
3D meshing	◆				◆
Spherical meshing	◆				◆
2D meshing	◆				◆
Mesh refining: smoothing, decimation, hole filling sharp, edges and borders reconstruction, junctions, cut mesh, inspection steps, subdivide	◆				◆
Mesh extrusion	◆				◆
Mesh convex hull	◆				◆
Meshing under constraints (with polylines)	◆				◆
Mesh segmentation	◆				◆
Spikes detection	◆				◆
Write on mesh	◆				◆
DSM and DTM creation		◆			◆
Building extraction		◆	◆		◆
<b>CONTROL/INSPECTION/ANALYSIS</b>					
Angle, distance, surface	◆				◆
Cubature/volume	◆				◆
Geometric shape extraction	◆				◆
3D inspection	◆				◆

# Leica Cyclone 3DR Technical Specifications

FEATURE	STANDARD (BASE)	SURVEY (OPTION)	AEC (OPTION)	TANK (OPTION)	PRO (EDITION)
---------	-----------------	-----------------	--------------	---------------	---------------

CONTROL/INSPECTION/ANALYSIS					
2D inspection	♦				♦
BIM inspection			♦		♦
Reporting (CSV, PDF and 3DPDF)	♦				♦
Stockpile measurement		♦			♦

CONTROL/INSPECTION/ANALYSIS					
Stockpile measurement		♦			♦
Cross-sections for tunnels and roads (creation, inspection, volumes, unroll)		♦	♦		♦
Surface analysis (levelness, flatness, slope)		♦	♦		♦
Clash analysis / Export BCF clashes			♦		♦
Inspection notes / Export BCF issues			♦		♦

POLYLINES/SECTION/EXTRACT					
Sections (planar, radial, etc.)	♦				♦
Smoothing	♦				♦
Decimation	♦				♦
Chaining	♦				♦
Neutral axis extraction	♦				♦
Breakline extraction (single)	♦				♦
Planar contour extraction	♦				♦
Contour lines		♦			♦
Breakline extraction (multiple)		♦			♦
Polyline edition (stretch, edit, resample, replace...)	♦				♦
Scan to Plan			♦		♦

IMAGE/TEXTURE MANAGEMENT					
Conversion between inspected or coloured mesh to textured mesh		♦			♦
Automatic and manual mapping of pin hole, cube faces and spherical images		♦			♦
Automatic and manual mapping of ortho-images		♦			♦
Camera calibration		♦			♦
Take colours from cloud	♦				♦
Creation of texture atlas		♦			♦
Ortho-image (including georeferencing information as Word file)		♦			♦
Texture edition (adjust, explode, remove)		♦			♦
Texture from material		♦			♦

REVERSE ENGINEERING					
IGES, STEP and DXF import	♦				♦
REVIT, IFC and DWG import			♦		♦
CAD Surface creation			♦		♦
Local or overall surface improvements			♦		♦
Reverse engineering workflow (creation and edition of networks, CAD surface generation based on networks, manage overlapped surface)			♦		♦

# Leica Cyclone 3DR Technical Specifications

FEATURE	STANDARD (BASE)	SURVEY (OPTION)	AEC (OPTION)	TANK (OPTION)	PRO (EDITION)
<b>REVERSE ENGINEERING</b>					
IGES/STEP export (geometrical shapes and existing CAD model)	◆				◆
Support of measuring arm with RDS			◆		◆
<b>TANK MONITORING MODULE</b>					
3D inspection				◆	
Roundness and verticality				◆	
Settlements				◆	
Export and reporting				◆	
<b>USER INTERFACE</b>					
Orthographic and perspective view	◆				◆
Multiview	◆				◆
Tree explorer	◆				◆
AutoSaves	◆				◆
Limit box, limit planed and limit slices	◆				◆
Grid	◆				◆
Shortcuts	◆				◆
Send to/Send from AutoCAD	◆				◆
Send to/Send from Hexagon MinePlan	◆				◆
Localisation	◆				◆
Cyclone camera	◆				◆
Unit management	◆				◆
<b>TOUCH MODE WORKFLOWS</b>					
BIM Inspection including connection to Cyclone FIELD 360 and Cyclone FIELDWORX			◆		◆
<b>AUTOMATION</b>					
Scripting	◆				◆
<b>POINT CLOUD IMPORT FORMATS</b>					
Leica Geosystems (*.pts, *.ptx) and LGS (*.lgs)	◆				◆
Leica Nova MS50/60 (*.sdb, *.xml)	◆				◆
ShapeGrabber (*.3pi)	◆				◆
3DReshaper binary file (*.nsd)	◆				◆
AutoDesk DXF (*.dxf)	◆				◆
STL (*.stl)	◆				◆
Polyworks (*.psl)	◆				◆
Leica T-Scan + Steinbichler (*.ac)	◆				◆
LiDAR data (*.las; laz)	◆				◆
Other ASCII (*.*)	◆				◆
Zoller and Fröhlich (*.zfs - *.zfc)	◆				◆
PLY points without triangles (*.ply)	◆				◆
ESRI ASCII (raster format *.asc)	◆				◆
FARO (*.fls - *.fws)	◆				◆
POLYWORKS (*.psl)	◆				◆
E57 (*.E57 files)	◆				◆

# Leica Cyclone 3DR Technical Specifications

FEATURE	STANDARD (BASE)	SURVEY (OPTION)	AEC (OPTION)	TANK (OPTION)	PRO (EDITION)
<b>POINT CLOUD IMPORT FORMATS</b>					
LandXML files (*.xml)	◆				◆
DOT Products (*.dpl)	◆				◆
RDBX	◆				◆
<b>MESH IMPORT FORMATS</b>					
STL format (*.stl)	◆				◆
Binary PBI format (*.pbi)	◆				◆
DXF 3Dface format (*.dxf)	◆				◆
ASCII POLY format (*.poly)	◆				◆
OBJ format (*.obj)	◆				◆
ASCII Leica format (*.msh)	◆				◆
VRML files deprecated (*.vrl / *.vrm / *.iv)	◆				◆
<b>MESH IMPORT FORMATS</b>					
OFF files (*.off)	◆				◆
PLY (*.ply)	◆				◆
GLB files (*.glb, *.glft)	◆				◆
<b>CONTOUR/SECTION IMPORT FORMATS</b>					
IGES format	◆				◆
DXF polyline format	◆				◆
Binary MLI format (*.mli)	◆				◆
<b>CAD MODEL IMPORT FORMATS</b>					
IGES	◆				◆
STEP	◆				◆
DWG			◆		◆
<b>BIM MODEL IMPORT FORMATS</b>					
IFC			◆		◆
RVT			◆		◆
<b>PROJECT FILES - IMPORT</b>					
RESHAPER (*.rsh)	◆				◆
DXF	◆				◆
XML	◆				◆
Cyclone MSView and JetStream database through the CloudWorx plugin	◆				◆
<b>POINT CLOUD EXPORT FORMATS</b>					
ASCII FILES (*.asc, *.csv...)	◆				◆
Binary files (*.nsd)	◆				◆
Leica Geosystems (*.pts, *.ptx)	◆				◆
E57 (*.e57)	◆				◆
IGES (*.igs)	◆				◆
LAS (*.las)	◆				◆
LAZ (*.laz)	◆				◆
AutoDesk DXF (*.dxf)	◆				◆

# Leica Cyclone 3DR Technical Specifications

FEATURE	STANDARD (BASE)	SURVEY (OPTION)	AEC (OPTION)	TANK (OPTION)	PRO (EDITION)
<b>MESH EXPORT FORMATS</b>					
ASCII and binary STL format (*.stl)	◆				◆
Binary PBI format (*.pbi)	◆				◆
DXF 3Dface format (*.dxf)	◆				◆
ASCII POLY format (*.poly)	◆				◆
Vertices only (*.asc)	◆				◆
DXF polyline (*.dxf)	◆				◆
STEP file (*.stp)	◆				◆
ASCII Leica format (*.msh)	◆				◆
VRML 2 deprecated (*.wrl / *.vml / *.iv)	◆				◆
PLY (*.ply)	◆				◆
LandXML (*.xml)	◆				◆
OBJ format (*.obj)	◆				◆
GLB files (*.glb)	◆				◆
<b>CONTOUR/SECTION EXPORT FORMATS</b>					
IGES format	◆				◆
DXF polyline format	◆				◆
Binary MLI format (*.mli)	◆				◆
ASCII formats	◆				◆
<b>CAD MODEL EXPORT FORMATS</b>					
IGES (geometrical shapes and existing CAD model)	◆				◆
STEP (geometrical shapes and existing CAD model)	◆				◆
Image export format	◆				◆
Ortho-image including georeferencing information as World file	◆				◆
<b>PROJECT FILES - EXPORT</b>					
RESHAPER (*.rsh)	◆				◆
DXF	◆				◆
PDF 3D	◆				◆
SKETCHFAB	◆				◆
Animation - Video	◆				◆
BCF report (BIM)			◆		◆
<b>PUBLISHING FEATURES</b>		<b>PUBLISHER</b>		<b>PUBLISHER PRO</b>	
Publish to LGS (point clouds and clipping objects)		◆		◆	

# Leica Cyclone 3DR Technical Specifications

## Recommended Specifications

Processor	2 GHz Dual Quad Core i7 processor or better
RAM	Minimum 16 GB or more for 64 bit OS
Hard Disk	1 GB free disk space
Graphic Card	NVidia – Quadro or GeForce 1GB (with OpenGL support, versions 4.3 or higher)
Operating System	Microsoft Windows® 7 – 8 – 10 (64 bits supported)
Tablet Device for Touch Mode	Microsoft Surface PRO Core i7 1.5 GHz – 16GB RAM
Minimum requirements for Automatic Classification	Graphic card: Nvidia with GPU capabilities RAM: 32 GB Hard disk: 10 GB free disk space CUDA® 11.2 Toolkit from NVidia

## Edition Components

Cyclone 3DR Survey Edition	Cyclone 3DR Standard Cyclone 3DR Survey Option
Cyclone 3DR AEC Edition	Cyclone 3DR Standard Cyclone 3DR AEC Option
Cyclone 3DR Tank Edition	Cyclone 3DR Standard Cyclone 3DR Tank Option
Cyclone 3DR Pro Edition	Cyclone 3DR Standard Cyclone 3DR Survey Option Cyclone 3DR AEC Option

## Customer Care Package (CCP) Information

Cyclone 2021	1 November 2021
Cyclone REGISTER 360 2021	1 November 2021

Revolutionising the world of measurement and survey for nearly 200 years, Leica Geosystems, part of Hexagon, creates complete solutions for professionals across the planet. Known for premium products and innovative solution development, professionals in a diverse mix of industries, such as aerospace and defence, safety and security, construction, and manufacturing, trust Leica Geosystems for all their geospatial needs. With precise and accurate instruments, sophisticated software, and trusted services, Leica Geosystems delivers value every day to those shaping the future of our world.

Hexagon is a global leader in sensor, software and autonomous solutions. We are putting data to work to boost efficiency, productivity, and quality across industrial, manufacturing, infrastructure, safety, and mobility applications. Our technologies are shaping urban and production ecosystems to become increasingly connected and autonomous – ensuring a scalable, sustainable future.

Hexagon (Nasdaq Stockholm: HEXA B) has approximately 21,000 employees in 50 countries and net sales of approximately 3.8bn EUR. Learn more at [hexagon.com](https://www.hexagon.com) and follow us [@HexagonAB](https://twitter.com/HexagonAB).

Cyrax and HDS are registered trademarks and Cyclone and CloudWorx are trademarks of Leica Geosystems LLC. All other trademarks or registered trademarks are property of their respective owners.

Product functionality is subject to change.

Microsoft, Windows® and the Windows logo are either registered trademarks or trademarks of Microsoft Corporation in the United States and / or other countries.

Copyright Leica Geosystems AG, 9435 Heerbrugg, Switzerland. All rights reserved.  
Printed in Switzerland – 2019. Leica Geosystems AG is part of Hexagon AB. 903874en – 11.21