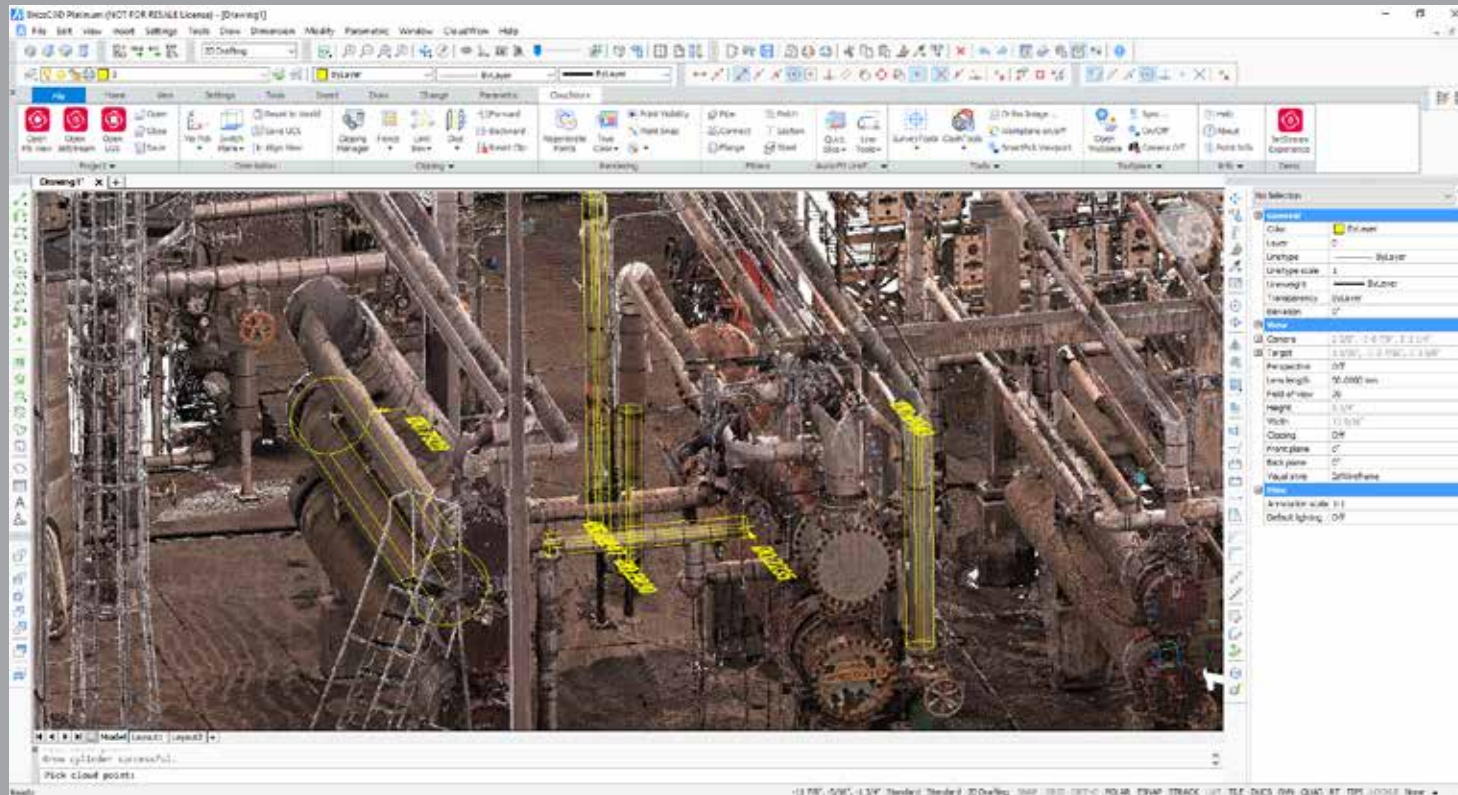


Leica CloudWorx Technical Specifications



Valid as of June 2020

leica-geosystems.com



- when it has to be **right**

Leica
Geosystems

Leica CloudWorx Technical Specifications

VISUALISATION, MODELLING & QUERY TOOLS	AutoCAD Basic	AutoCAD Pro	Bentley	PDMS	Revit	Navisworks	BricsCAD Basic	BricsCAD Pro	SOLIDWORKS	Ultimate
Large Point Cloud Support	◆	◆	◆	◆	◆	◆	◆	◆	◆	◆
Level of Detail (LOD) graphics	◆	◆	◆	◆	◆	◆	◆	◆	◆	◆
Visualisation Modes										
Intensity mapping and True colour	◆	◆	◆	◆	◆	◆	◆	◆	◆	◆
Silhouette Mode	◆	◆	◆	◆	◆	◆	◆	◆		◆
Colour by elevation	◆	◆			◆	◆	◆	◆	◆	
Cutplane Manager (sections, slices)	◆	◆	◆	◆	◆	◆	◆	◆	◆	◆
Hide Regions Manager (fences)	◆	◆	◆	◆	◆	◆	◆	◆	◆	◆
Layers in Cyclone database	◆	◆	◆	◆	◆	◆	◆	◆	◆	◆
Tracing	◆	◆	◆	◆	◆		◆	◆	◆	◆
Limit box	◆	◆	◆	◆	◆	◆	◆	◆	◆	◆
Design Point Placement: Pipe Centre D-Point, D-Point at pick				◆						◆
Flange Tie-Point Location Tool: Place flange D-Point from point cloud				◆	◆					◆
Interference Checking		◆	◆	◆	◆	◆		◆		◆
Flange Tie-Point Location Tool		◆	◆		◆			◆		◆
Modelling										
Pipes Fitter (from catalogue)		◆	◆	◆	◆			◆	◆	◆
Elbows		◆			◆			◆		◆
Flange (from catalogue)		◆			◆			◆		◆
2D lines, Polyline arcs		◆	◆		◆			◆		◆
Steel Fitter (from catalogue)		◆	◆	◆	◆			◆	◆	◆
Column Fitter					◆					◆
Window Fitter					◆					◆
Door Fitter					◆					◆
Wall Fitter					◆					◆
Fit wall from polyline					◆					◆
Fit Revit-native objects					◆					◆
Align cloud to model					◆					◆
Advanced clash management database system		◆	◆		◆	◆		◆		◆
QuickSlice		◆				◆		◆		◆
Auto-Fit Polyline from 1 Pick & 2 Pick		◆				◆		◆		◆
Open KeyPlan		◆	◆	◆		◆		◆		◆
TruSpace										
Open TruSpace		◆	◆	◆	◆	◆		◆	◆	◆
Sync TruSpace viewer to Viewport or Viewer in CAD system		◆	◆	◆	◆	◆		◆		◆
Sync CAD Drawing tools to TruSpace		◆	◆		◆			◆		◆
Quick Limit Box from TruSpace		◆	◆	◆	◆	◆		◆		◆
View GeoTags in TruSpace		◆	◆	◆	◆	◆		◆		◆

The below computer specifications are applicable to all Leica CloudWorx products.

Minimum Computer Specification

Processor	2 GHz Dual Core processor or better
RAM	Minimum 8 GB or more for 64-bit OS
Graphics card	Nvidia - Quadro or GeForce 1 GB (with OpenGL support, versions 3.2 or higher)
Operating system	Microsoft, Windows® 7-8-10 (64 bit supported)
Hard disk	40 GB with 1 GB or more free disk space

Recommended Computer Specification

Processor	3.0 GHz Quad Core w/ Hyper-threading or higher
RAM	32 GB or more for 64-bit OS
Graphics card	Nvidia - Quadro or GeForce 1 GB (with OpenGL support, versions 3.2 or higher) with latest drivers
Operating system	Reference documentation for destination CAD package
Hard disk	500 GB SSD Drive with 1 GB or more free disk space
Large project disk option	RAID 5,6 or 10 w/ SATA or SAS drives

Version Compatibility

CloudWorx 2020 for AutoCAD Basic/Pro	AutoCAD, Civil3D and Map3D 2016-2021
CloudWorx for 2020 Bentley	Microstation: J-Vi8, CONNECT AECOSim Building Designer CONNECT Edition Update 4 OpenBuildings Designer CONNECT Edition Update 5, 6
CloudWorx for 2020 PDMS	PDMS versions 12.0 and 12.1. For version 12.0 you need at least PDMS12.0.SP6.55 hotfix and for 12.1 you need at least 12.1.SP4 hotfix.
CloudWorx for 2020 Revit	Revit 2016-2021
CloudWorx for 2020 Navisworks	Navisworks Manage and Simulate 2016-2021
CloudWorx for 2020 BricsCAD Basic/Pro	BricsCAD v18 – v21

CloudWorx for 2020 SOLIDWORKS

SOLIDWORKS 2018- 2020

Customer Care Packages (CCP) Information

CloudWorx 2020 for AutoCAD Basic/Pro January 25, 2020

CloudWorx 2020 for MicroStation January 25, 2020

CloudWorx 2020 for Bentley January 25, 2020

CloudWorx 2020 for PDMS January 25, 2020

CloudWorx 2020 for Revit January 25, 2020

CloudWorx 2020 for Navisworks January 25, 2020

CloudWorx for 2020 BricsCAD Basic/Pro January 25, 2020

CloudWorx for 2020 SOLIDWORKS January 25, 2020

CloudWorx Ultimate Compatibility

CloudWorx for AutoCAD

CloudWorx for Revit

CloudWorx for Navisworks

CloudWorx for Bentley

CloudWorx for PDMS

Leica Geosystems – when it has to be right

Revolutionising the world of measurement and survey for nearly 200 years, Leica Geosystems is the industry leader in measurement and information technologies. We create complete solutions for professionals across the planet. Known for innovative product and solution development, professionals in a diverse mix of industries, such as surveying and engineering, building and heavy construction, safety and security, and power and plant trust Leica Geosystems for all their geospatial needs. With precise and accurate instruments, sophisticated software, and trusted services, Leica Geosystems delivers value every day to those shaping the future of our world.

Leica Geosystems is part of Hexagon (Nasdaq Stockholm: HEXA B; hexagon.com), a leading global provider of information technology solutions that drive productivity and quality across geospatial and industrial landscapes.

Cyrax and HDS are registered trademarks and Cyclone and CloudWorx are trademarks of Leica Geosystems LLC. All other trademarks or registered trademarks are property of their respective owners.

Copyright Leica Geosystems AG, 9435 Heerbrugg, Switzerland. All rights reserved. Printed in Switzerland – 2019. Leica Geosystems AG is part of Hexagon AB. 882142en – 06.20

Leica Geosystems AG
Heinrich-Wild-Strasse
9435 Heerbrugg, Switzerland
+41 71 727 31 31

- when it has to be **right**

Leica
Geosystems