

Deploying Cyclone 3DR

Installation Procedure

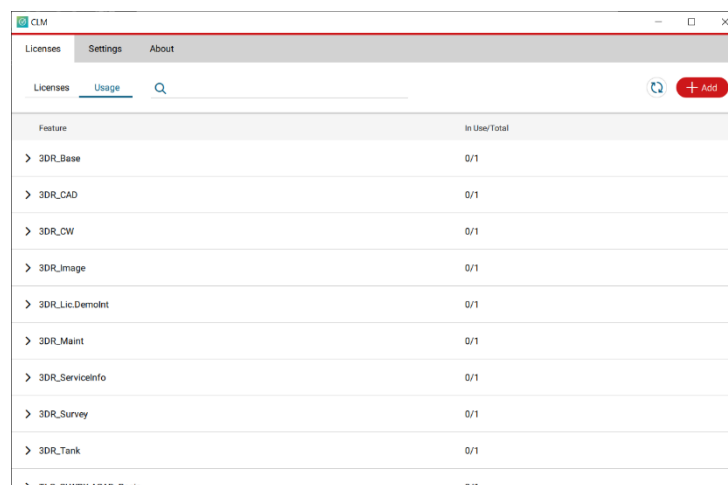
1. Follow the directions in the Setup Wizard



2. Complete the installation by selecting "Finish".

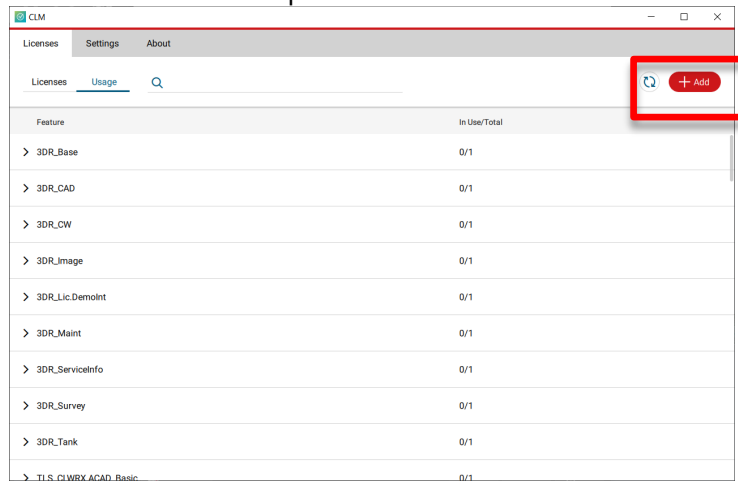
Licensing Setup

1. Once you have installed Cyclone 3DR, open the Client License Manager for Floating Licenses. The program is located here: **Start Menu | All Programs | Leica Geosystems | Client License Manager**

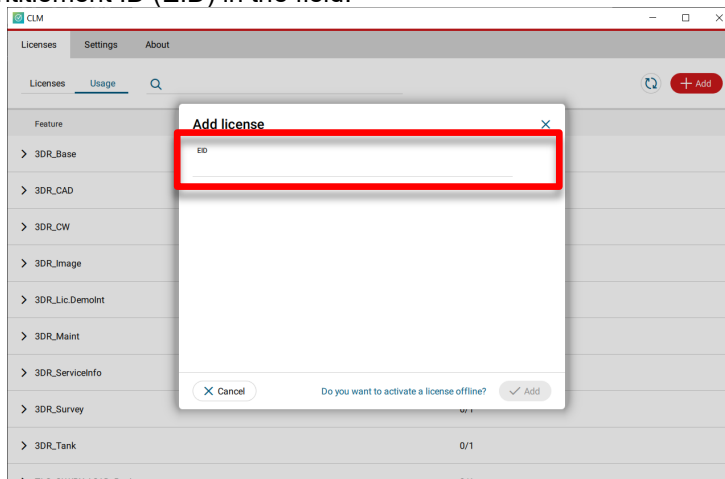


***NOTE* Be sure to choose the CLM Floating option (there are two CLM options and the Nodelocked CLM will not activate your license)**

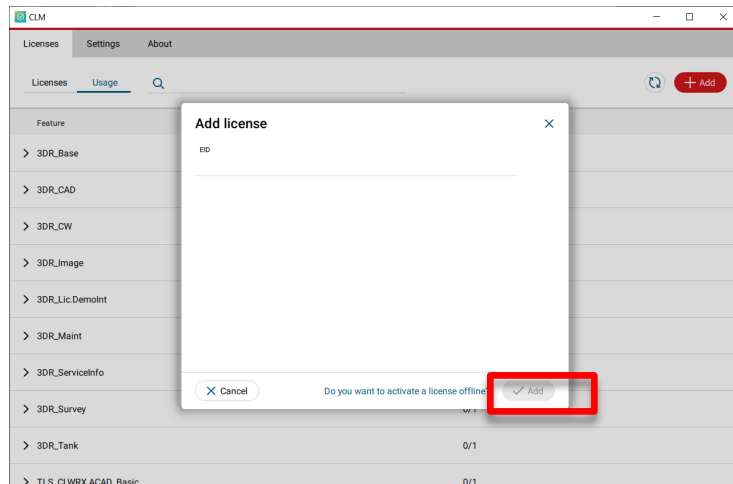
2. Choose the "Activate new licenses" option.



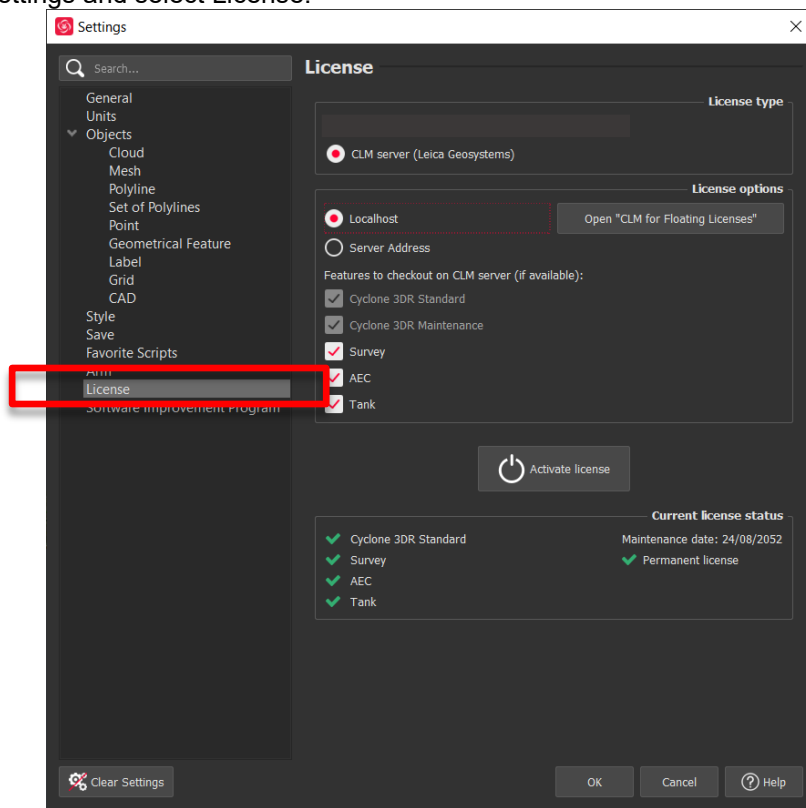
3. Enter your Entitlement ID (EID) in the field.



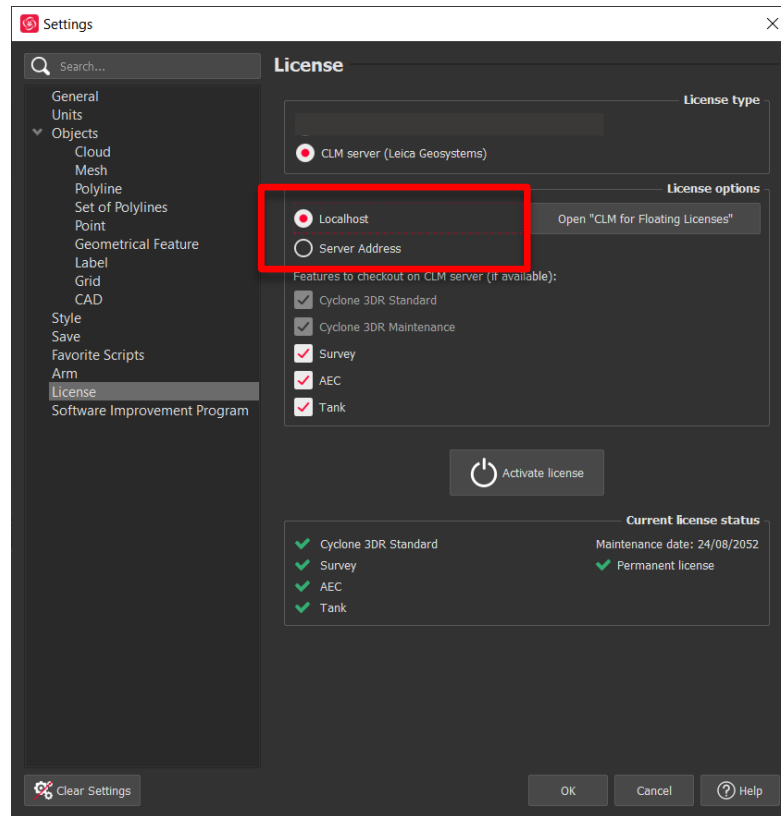
4. After you have entered your EID, choose the "Check for Activatable licenses" button in the bottom right of the page



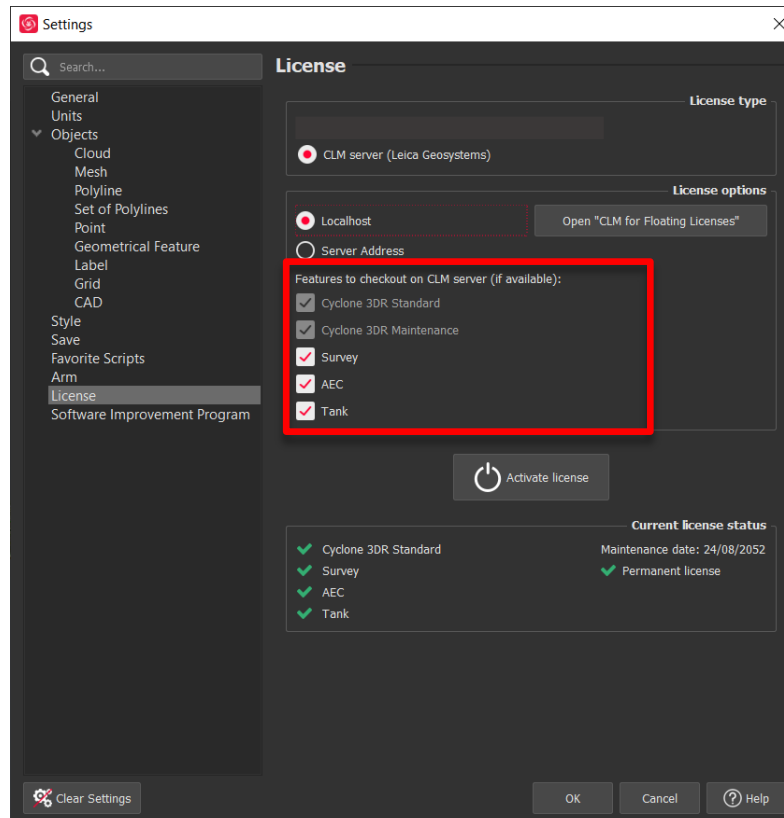
5. Once your licenses are activated you can launch Cyclone 3DR.
6. Go to Settings and select License.



7. If you have entered the EID inside your local CLM, select **Localhost**. If the license is on a dedicated server, enter the server name in **Server Address**.



8. You can select the features you want to check out from CLM. Your Evaluation EID includes the Cyclone 3DR Pro feature set: Standard, AEC and Survey.



9. Once the options are selected, click on **Activate license**.

