

Leica Geosystems Release Notes

Product Leica BLK360 Data Manager 1.5.0
Date 20 August 2018
From HDS Software Product Management

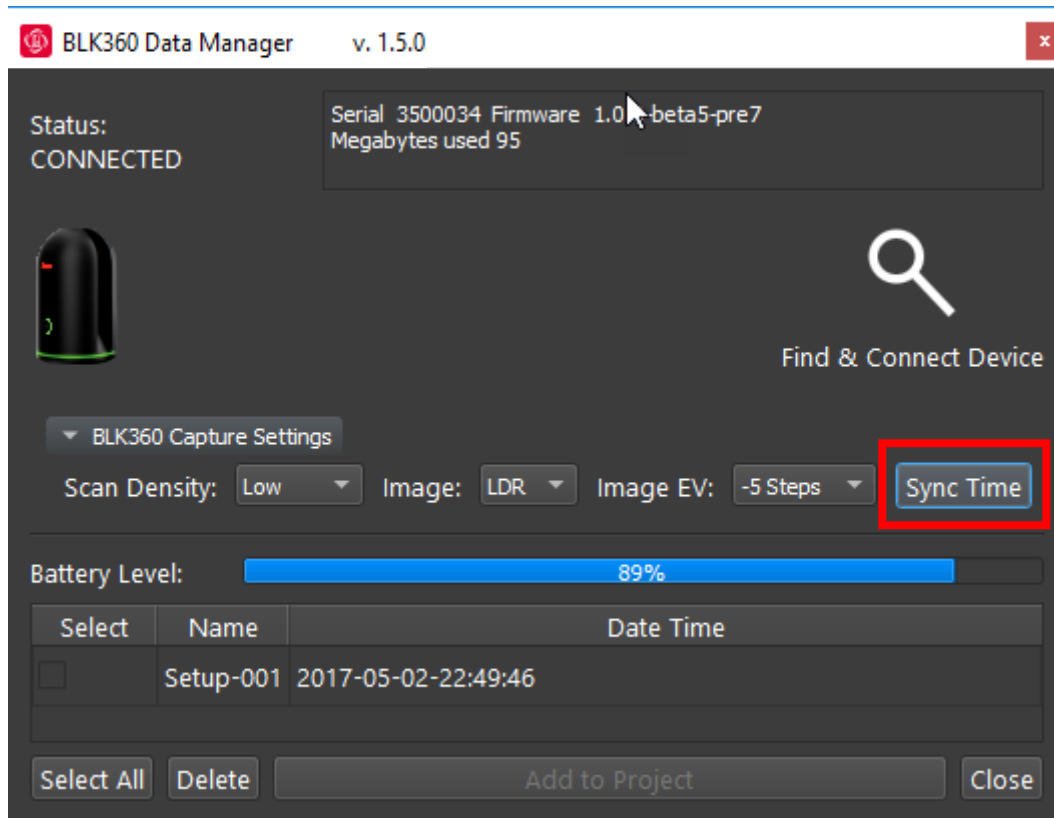
Contents

What's new	2
Sync Time command	2
Multi-Select Scans	2

What's new

Sync Time command

A Sync Time option has been added to the BLK360 Data Manager to allow users to capture data with timestamps reflective of local time. Perfect for users who deliver data to clients and colleagues outside of their time zone. To sync the time of the BLK360 to the connected computer, click the Sync Time button in the Data Manager:



Multi-Select Scans

Users can now multi-select scans within the BLK360 Data Manager to accelerate the data selection process and reduce pick-errors introduced by manual selection of individual scans. Use the shift key to multi-select scans in the main dialog.