

Leica Geosystems Release Notes

Product Leica CloudWorx 1.0.5 for Navisworks
Date 15 November 2016
From Bill Wallace, Senior TLS Software Product Manager

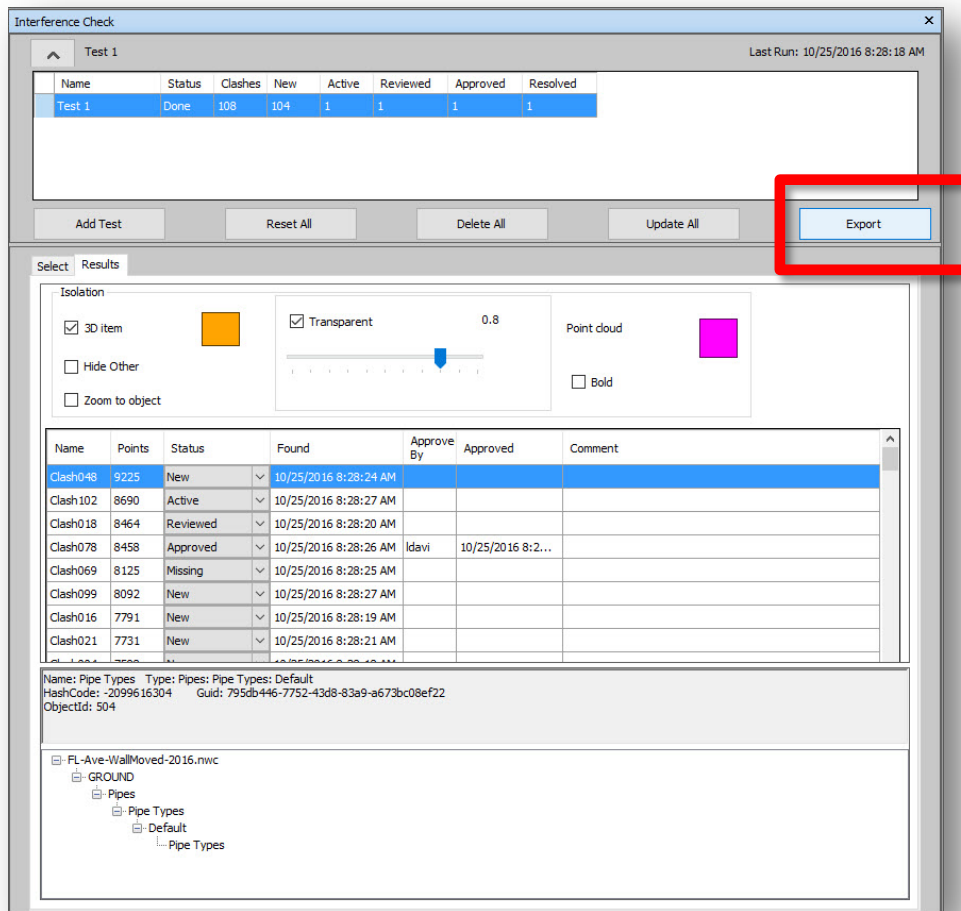
Contents

What's New	2
Bug Fixes	2
Leica CloudWorx 1.0.5 for Navisworks Compatibility and Upgrades	2
Upgrading to Leica CloudWorx 1.0.5 from Leica CloudWorx 1.0.x	2
Compatibility with Leica CloudWorx 1.0.5 AND Earlier Versions	3
Compatibility with Leica CloudWorx 1.0.5 AND Navisworks Versions	3
Known Issues	3
Optimizing Older Databases with Windows 7 and Higher	3

What's New

Export Clash Manager Results

After running the Clash Manager tool, users can now export the clash records to a text file (tab-delimited). It can then be imported into Excel, databases, etc. to aid the generation of reports.



Bug Fixes

- **Bug fixed where Clash Manager was not displaying the Run button**

Leica CloudWorx 1.0.5 for Navisworks Compatibility and Upgrades

Upgrading to Leica CloudWorx 1.0.5 from Leica CloudWorx 1.0.x

You must have Administrator-level privileges on your workstation to correctly install Leica CloudWorx software.

If using IMP data, first run the current Cyclone installer if you do not have a version of Cyclone installed. Otherwise/Next run the CloudWorx 1.0.5 InstallShield and follow the directions in the InstallShield Wizard to proceed with the installation. Please heed the warning message about compatibility of earlier version databases. We strongly recommend that when upgrading, please select the "Remove" option when it appears, rather than the "Repair" option.

All users with a valid license(s) for CloudWorx 1.0.x or later, currently valid CCP, or with CCP valid as late as May 25, 2015, can run this new version with no new license required.

Compatibility with Leica CloudWorx 1.0.5 AND Earlier Versions

Cyclone 7.2 databases are *NOT* backward compatible. Therefore older databases must be updated before using Cyclone 7.2 and can no longer be used with earlier versions. If you need to work with your data in older versions of Cyclone or CloudWorx, you should make an archive copy of your database(s) prior to upgrading. Since it can take some time to update and optimize Cyclone databases, we recommend that you optimize your databases overnight, particularly when multiple databases are involved.

Compatibility with Leica CloudWorx 1.0.5 AND Navisworks Versions

CloudWorx 1.0.5 officially supports Autodesk Navisworks Simulate and Manage versions 2015-2017.

Known Issues

Optimizing Older Databases with Windows 7 and Higher

If users wish to use CloudWorx 1.0.5 for Navisworks to optimize IMP databases from Cyclone version 7.0 or higher, they must first disable User Access Control prior to optimizing, or the optimization will not succeed yet no meaningful error message will be produced.