

# Leica Geosystems Release Notes

**Product**      Leica MultiWorx 2.3.1 for AutoCAD  
**Date**         4 September 2018  
**From**         HDS Software Product Management

## Contents

<b>Bug Fixes .....</b>	<b>2</b>
<b>Leica MultiWorx 2.3.1 for AutoCAD Compatibility and Upgrades.....</b>	<b>2</b>
Upgrading to Leica MultiWorx 2.3.1 for AutoCAD from Leica MultiWorx 2.0.x for AutoCAD .....	2
Compatibility with Leica MultiWorx 2.3.1 for AutoCAD AND Earlier Versions of Cyclone .....	2
Compatibility with Leica MultiWorx 2.3 for AutoCAD AND AutoCAD Versions .....	2
Compatibility with JetStream Enterprise .....	2
Compatibility with CloudWorx Ultimate.....	2
<b>Licensing.....</b>	<b>2</b>
<b>Known Issues .....</b>	<b>3</b>
Optimizing Older Databases with Windows 7 and Higher .....	3
Installing CLM while JetStream service is running .....	3

## Bug Fixes

- Resolved an issue that prevented CloudWorx from connecting to JetStream Enterprise 1.5 and/or loading LGS files. Compatibility with earlier versions of JetStream Enterprise and Cyclone IMP database was not affected.
- Resolved an installation issue that affected the Cyclone modelspace view dialog. Issue affected customers installing CloudWorx on a new Windows 10 system only.
- Resolved a previous known issue that resulted in a point cloud slowly drifting across the screen after panning or zooming while in 2D wireframe mode.

## Leica MultiWorx 2.3.1 for AutoCAD Compatibility and Upgrades

### ***Upgrading to Leica MultiWorx 2.3.1 for AutoCAD from Leica MultiWorx 2.0.x for AutoCAD***

You must have Administrator-level privileges on your workstation to correctly install Leica MultiWorx software.

If using IMP data, first run the current Cyclone installer if you do not have a version of Cyclone installed. Otherwise/Next run the MultiWorx 2.3.1 InstallShield and follow the directions in the InstallShield Wizard to proceed with the installation. Please heed the warning message about compatibility of earlier version databases. We strongly recommend that users not use the “Repair” option when upgrade. Rather, users should select “Remove” when it appears and then run the InstallShield again to install the new version.

### ***Compatibility with Leica MultiWorx 2.3.1 for AutoCAD AND Earlier Versions of Cyclone***

Cyclone 7.2 databases are *NOT* backward compatible. Therefore, older databases must be updated before using Cyclone 7.2 and can no longer be used with earlier versions. If you need to work with your data in older versions of Cyclone or MultiWorx, you should make an archive copy of your database(s) prior to upgrading. Since it can take some time to update and optimize Cyclone databases, we recommend that you optimize your databases overnight, particularly when multiple databases are involved.

### ***Compatibility with Leica MultiWorx 2.3 for AutoCAD AND AutoCAD Versions***

MultiWorx 2.3.1 for AutoCAD officially supports Autodesk AutoCAD versions 2012-2019.

MultiWorx 2.3.1 for AutoCAD’s support of RCP data is only supported in AutoCAD 2015 and later.

### ***Compatibility with JetStream Enterprise***

MultiWorx 2.3.1 for AutoCAD is compatible with JetStream 1.3 and higher. To access the latest features, it is recommended that users update to the latest release of JetStream Enterprise 1.5.

### ***Compatibility with CloudWorx Ultimate***

MultiWorx 2.2.1 (or later) for AutoCAD is compatible with the CloudWorx Ultimate License.

## Licensing

All users with a valid license(s) for MultiWorx 2.3.x or later, currently valid CCP, or with CCP valid as late as 30 June 2018 can run this new version with no new license required.

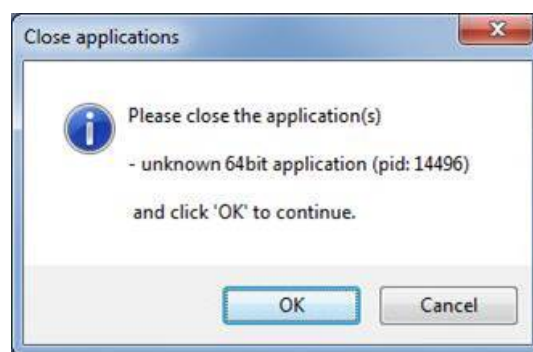
## Known Issues

### ***Optimizing Older Databases with Windows 7 and Higher***

If users wish to use MultiWorx 2.3.1 for AutoCAD to optimize IMP databases from Cyclone version 7.0 or higher, they must first disable User Access Control prior to optimizing, or the optimization will not succeed yet no meaningful error message will be produced.

### ***Installing CLM while JetStream service is running***

During installation of CLM, users may encounter the following error message. This is commonly due to a service like JetStream running in the background.



To enable the successful installation of CLM, please follow these steps:

- Launch the task manager
- Select the Services tab
- Look up the process with the PID (Process ID) shown in the Close applications dialog
- In this case it is JetStream
- Terminate the process so that CLM can be installed
- After CLM is installed, click on the Services button in the Task Manager and restart the service