

Leica Geosystems Release Notes

Product Leica Cyclone 9.2.1
Date 3 January 2018
From HDS Software Product Management

Contents

What's New	2
Support for the new ScanStation P50	2
Enhancements to Support of BLK360 data	2
Cyclone 9.2.1 now support BLK360 firmware 1.1.1	3
Cyclone REGISTER Enhancements.....	3
New Import option for the External Camera Kit for the C- and P-Series ScanStations	4
Bug Fixes	4
Leica Cyclone 9.2.1 Compatibility and Upgrades	4
Windows 32-bit Support	4
Cyclone Database Management Recommendation	5
Upgrading to Cyclone 9.2.1 from Cyclone 6.0.x – 9.2	5
Compatibility with Cyclone 9.2.1 AND Cyclone 8.1.3 or Earlier Versions	5
Known Issues	5
4K Imagery with TruView Local (ActiveX plugin) and Internet Explorer	5
Scanner locations are no longer visible in the ModelSpace when automatically created during Pegasus data import.....	5
Usage file reporting issue for Enterprise Elite Customers	6
Licensing	6

What's New

Support for the new ScanStation P50

Cyclone now fully supports data from the new Leica ScanStation P50 long-range 3D laser scanner.

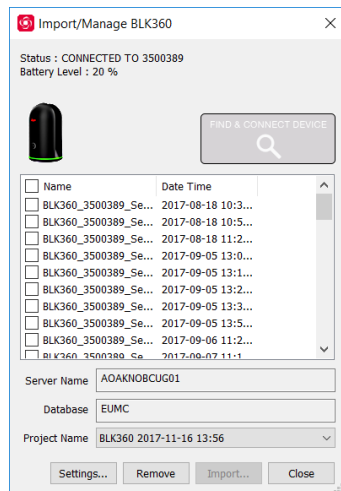
Enhancements to Support of BLK360 data

Note: Direct X 11 or higher is required on the graphics card to Import BLK360 data.

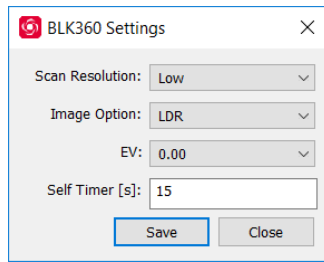
Cyclone 9.2.1 now supports BLK360 high-dynamic range (HDR) imagery

The BLK360 import dialog now enables the user to set the Scan Density, Image Exposure Value, and HDR or LDR image collection options to be saved/set as settings on the BLK360.

1. New BLK360 import dialog enhancements.
 - Open the BLK360 import dialog under **File-Import/Manage BLK360...**



- Click on the **Settings...** button to open the settings dialog:

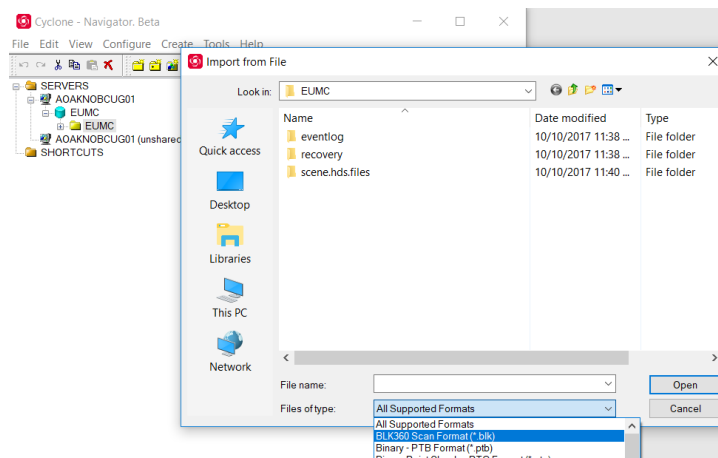


- **Scan Resolution: Low, Medium, High** for scan density.
- **Image Option: LDR or HDR.**
- **EV:** Set the exposure value from +5 to -5 (the higher the setting the more light allowed).
- **Self Timer [s]:** Sets the delay for scanning when the scanner button is pressed.

2. New direct import of BLK360 data in offline mode.

Data can be downloaded from the BLK360 with the new BLK360 Data Manager (see the QuickStart guide for the new **BLK360 Data Manager** in the Cyclone install directory). Scanner files downloaded with the **BLK360 Data Manager** can be directly imported into Cyclone.

- Create a Cyclone database
- Go to **File-Import** and select *.blk as the import file type.



- Proceed with the import process as normal.

Cyclone 9.2.1 now supports BLK360 firmware 1.1.1

This hardware firmware update brings HDR image support to the BLK360. Cyclone now supports the HDR imagery.

Cyclone REGISTER Enhancements

Cyclone REGISTER has been changed to reflect the following additions:

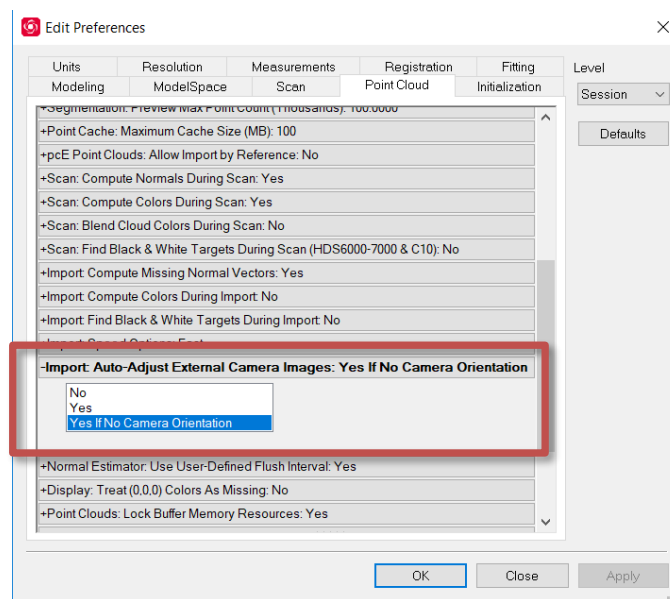
- Rotation handles for limit boxes have been added to Cyclone REGISTER
- Point cloud sub-select has been added to Cyclone REGISTER
- Smooth Surface region grow has been added to Cyclone REGISTER

New Import option for the External Camera Kit for the C- and P-Series ScanStations



This new option allows the user to set the option to Auto_Align if no camera orientation was done in the field.

The new option, **Yes If No Camera Orientation**, can be found under the Preferences:



Bug Fixes

- Fixed bug where MS50 data could not be imported
- Fixed an issue with publishing TruView data with GeoTags
- Fixed bug where Cyclone failed to write registration transformations back to ZFS files

Leica Cyclone 9.2.1 Compatibility and Upgrades

Windows 32-bit Support

Cyclone 9.2.1 no longer supports a 32-bit operating system.

Cyclone Database Management Recommendation

To avoid possible database inconsistencies or corruption while moving or copying databases, we recommend the following:

- Locate each *.imp file in its own folder
- When copying, moving or backing up databases, copy/move/back up the complete database folder, including the *.imp file, **eventlog** folder and files, and **recovery** folder and files
 - The **eventlog** records administrative events and critical errors
 - The **recovery** file keeps databases consistent, avoiding data corruption that may happen in rare situations
- When adding databases to Cyclone, a warning dialog is displayed if a database's recovery folder cannot be found when it is added to the database server. Push the **More Info** button for more information.

Upgrading to Cyclone 9.2.1 from Cyclone 6.0.x – 9.2

You must have Administrator-level privileges on your workstation to correctly install Leica Cyclone software.

Run the Cyclone 9.2.1 InstallShield and follow the directions in the InstallShield Wizard to proceed with the installation. Please read the warning message about compatibility of earlier version databases as older Cyclone *.imp files will be upgraded to the new version and may no longer work in the older version of Cyclone.

Compatibility with Cyclone 9.2.1 AND Cyclone 8.1.3 or Earlier Versions

Cyclone 9.2.1 databases are *NOT* backward compatible with previous Cyclone versions 8.1.3 and earlier. Databases that are updated using this version of Cyclone cannot then be used with earlier versions. If you need to work with your data in older versions of Cyclone, you should make an archive copy of your database(s) prior to upgrading. Since it can take some time to update and optimize Cyclone databases, we recommend that you optimize your databases overnight, particularly when multiple databases are involved.

Known Issues

4K Imagery with TruView Local (ActiveX plugin) and Internet Explorer

The TruView Local plugin for Internet Explorer does not officially support 4K imagery. To take advantage of 4K imagery, we recommend [TruView Enterprise](#) or [TruView Cloud](#).

Scanner locations are no longer visible in the ModelSpace when automatically created during Pegasus data import

When importing Pegasus mobile scan data into Cyclone, the user is provided the option to automatically create ScanWorld positions at a user-defined interval along the trajectory. These are used for the creation of TruView positions at these virtual "setup" positions. Currently, if this automated process is used, the Scanner locations will not show up in the ModelSpace View, but will be correctly located and displayed on the Sitemap for published TruView datasets.

The scanner locations will be visible within the ModelSpace View if they are created manually after import.

Batch import Panoramic images

When using the Command **Import Panoramic images...** Images and scans in the import panel dialog may appear blank. The workaround is to resize the window.

Usage file reporting issue for Enterprise Elite Customers

When using the standalone CLM installer, some Enterprise Elite users may find that the usage file (year-month.db) normally located at *C:\Leica Geosystems\CLM\LogFiles* does not get produced.

Please ensure your LGS.opt (located here: *C:\Program Files (x86)\Common Files\Leica Geosystems\License-Server\lgs.opt*) file looks like this:

```
DEBUGLOG +"C:\Leica Geosystems\CLM\LogFiles\lgs.log"  
NOLOG IN  
TIMEOUTALL 240  
ENABLE_DB_HISTORY 1  
PATH_DB_HISTORY C:\Leica Geosystems\CLM\LogFiles
```

ENABLE_DB_HISTORY should be set to **1** in this file. Please copy the file to a new location, edit it and re-save if the file says it's read-only.

Licensing

Customers of Cyclone accessing Cyclone REGISTER 360 must have current CCP or CCP valid as of September 1, 2017 to run Cyclone REGISTER 360 1.4.1.

Customers of Cyclone version 9.2 need no further license to run Cyclone 9.2.1.